

ART & TECHNOLOGY VILLAGE KYOTO

Sensibility & Impression

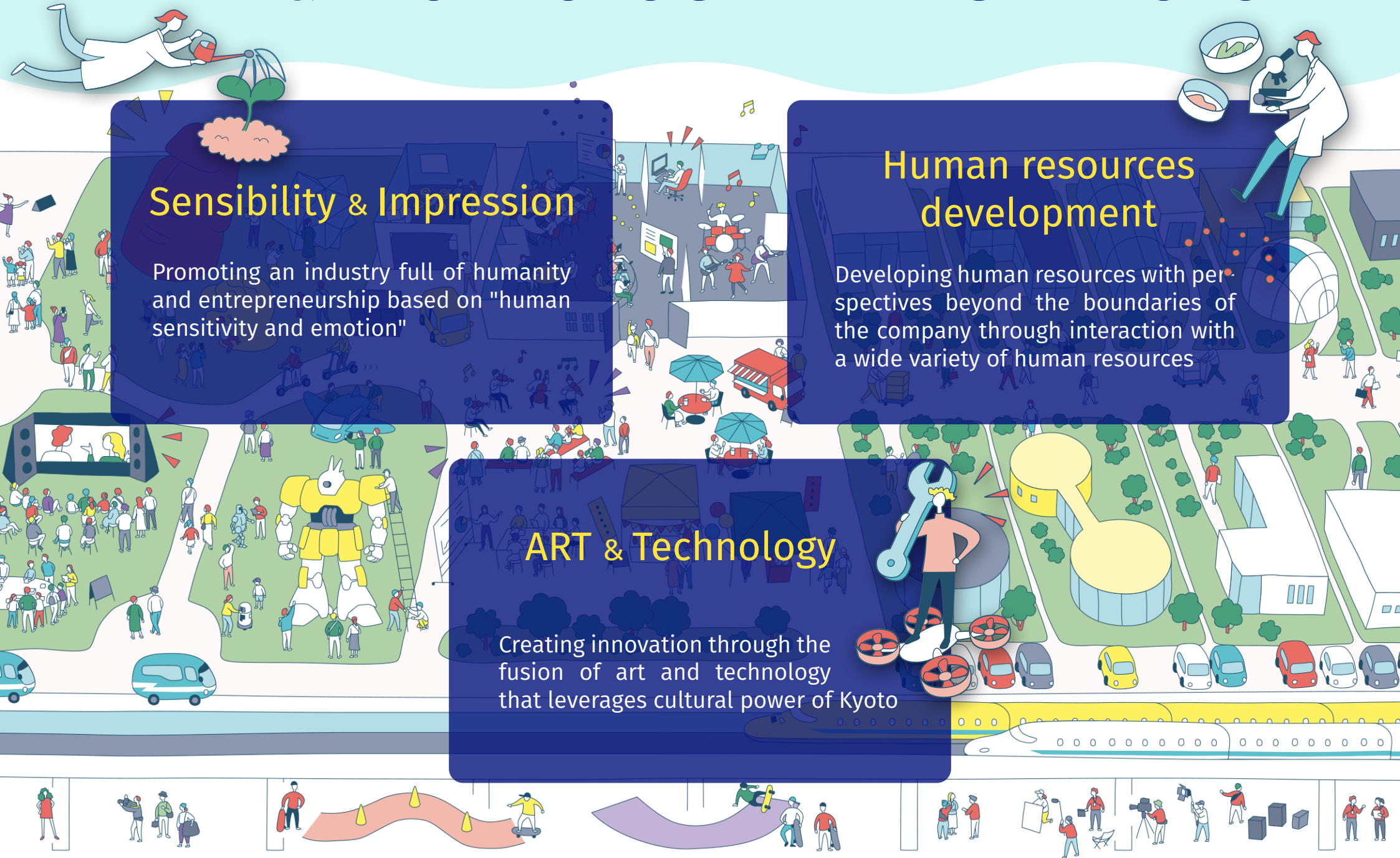
Promoting an industry full of humanity and entrepreneurship based on "human sensitivity and emotion"

Human resources development

Developing human resources with perspectives beyond the boundaries of the company through interaction with a wide variety of human resources

ART & Technology

Creating innovation through the fusion of art and technology that leverages cultural power of Kyoto



Interaction wing

Place to make issues and themes open and place for a wide variety of discussions

This place is equipped with meeting room, coworking room, and studio with distribution equipment. You can use this place for exchange meeting, research group for each theme, and company matching meeting, etc.

The plaza in front of the entrance is also available for rent.



Art collaboration space

Place for creating new art

In situations that are not usually found in galleries using a space under Shinkansen railway viaduct, you can freely realize various ideas such as exhibition of art works and performance place.



Demonstration space

Discovering new ideas
Place of demonstration experiment

This is a place to realize ideas born from demonstration experiment involving local residents and exchanges between different industries, different fields, and different ideas.



Company's site

Activity centres for a wide variety of locally located companies.

Companies with different industries, sizes, and fields collaborate with various companies, universities, and local communities, etc. and promote the creation of products and technological development that appeal to the senses and create new industries fusing art and technology to send information from this location.

[Tenant companies]

- Maxell, Ltd.
- Nippon Telenet Corporation
- SIROK, Inc.
- Okura Co., Ltd
- Anchor Ship Partners Co., Ltd.
- Headspring Inc.
- HAMADA PRESS TECHNICAL MFG. CO., LTD.

Creative space

Place for product development and manufacturing

Production space is located outside and you can use it as a place for use in conjunction with demonstration space.



Access

30-1, Kagamida, Oyamazaki, Oyamazaki Town, Kyoto Prefecture, 618-0071, Japan (Maxell Kyoto head office)

- Approximately 3 minutes by car from Oyamazaki Toll Gate of Meishin Expressway
- Approximately 20 minutes walk from JR Yamazaki Station and Hankyu Oyama Station

Contact us

ATVK secretariat (KYOTO Industrial Support Organization 21)
TEL: +81-75-925-8821 (direct call)



<https://atvk.kyoto>



Google Map